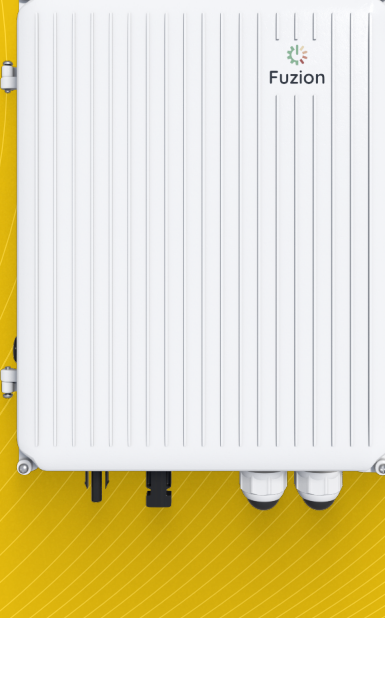


FTP-300

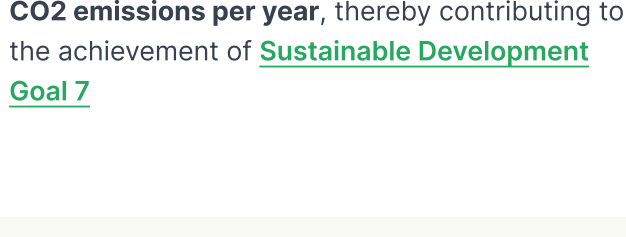
FTP-300 is a durable solar charged power solution with PoE in a small form factor ideal for Wi-Fi hotspots, surveillance cameras, microwave CPE's, cellular gateways and more.



About


FTP-300 is designed for “Deploy & Forget” deployments in remote areas and for operation under harsh environmental conditions.

FTP-300 is designed for energy efficiency and compatibility with a wide range of solar panels, thus mitigating the emissions and air pollution caused by diesel and coal powered connectivity infrastructure.




Each FTP-300 approximately **saves 175 kg of CO₂ emissions per year**, thereby contributing to the achievement of [Sustainable Development Goal 7](#)

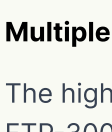
FTP-300 benefits

- 

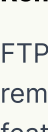
Powerful long-lasting battery

FTP-300 can provide up to 60 hours of battery backup to a Wi-Fi access point or be deployed with less battery capacity to minimize cost of batteries. The battery cells may last for up to 10 years.
- 

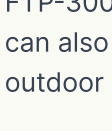
High power to size ratio

Leveraging Li-ion batteries, FTP-300 delivers an unprecedented amount of power compared to its small size.
- 


Deploy and forget

FTP-300 is designed to work in harsh and remote locations. To conserve battery longevity, FTP-300 turns off when power levels become too low to sustain further usage. When the charge level is back above the threshold, FTP-300 automatically turns on again. No human intervention required.
- 

Versatile

Having a separate DC output and two back-to-back connected data connectors, which individually can be PoE enabled, FTP-300 can be used in multiple applications such as powering wireless access points, surveillance cameras, wireless bridges and repeaters, fiber ONUs, and remote lighting systems.
- 

Multiple options for power input

The high-grade built-in MPPT means that FTP-300 is perfectly coupled with solar panels. It can also work with AC power with the Fuzion IP-67 outdoor rated AC/DC adapter.
- 

Remote power monitoring

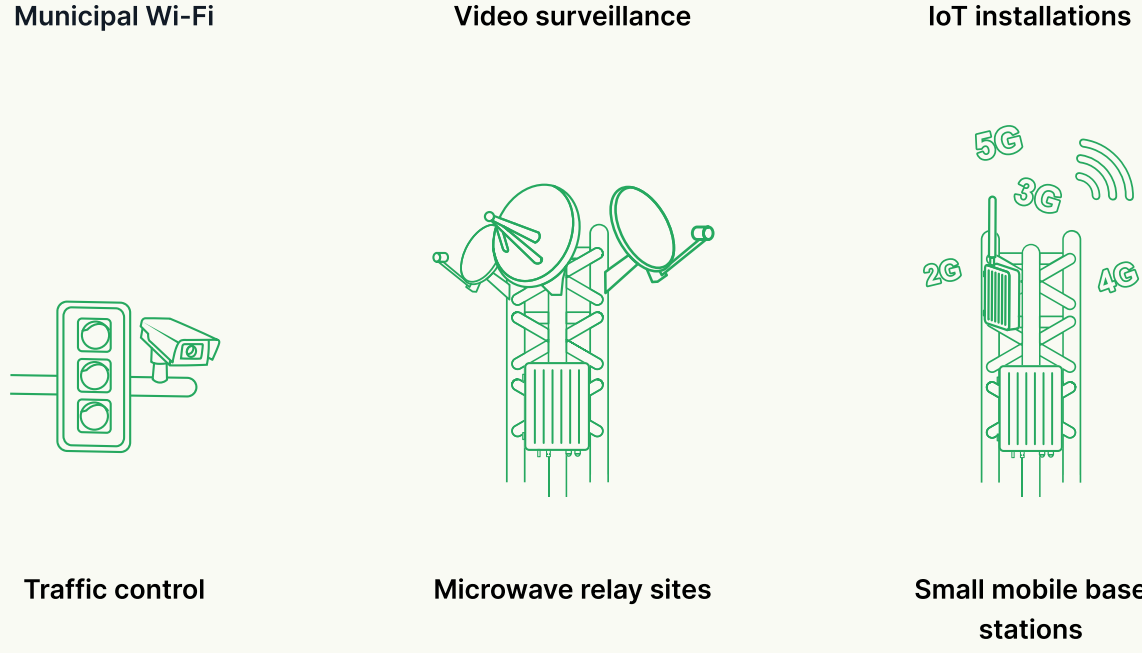
FTP-300 has built-in IoT capabilities including remote monitoring capabilities. The Smart Power feature can be demonstrated and will soon be available on trial mode on request

FTP-300 – 300Wh Networked Power Unit



Common applications

Ideal for Wi-Fi hotspots, surveillance cameras, microwave CPE's, cellular gateways and more. Everything you need for smart city projects.



Sustainable development

Powering networks with Fuzion directly addresses multiple UN Sustainable Development Goals

GOAL 7.2

Affordable and clean energy

By 2030, increase substantially the share of renewable energy in the global energy mix.

GOAL 9.1

Industry innovation and infrastructure

Develop quality, reliable, sustainable and resilient infrastructure ... to support economic development and human well-being, with a focus on affordable and equitable access for all.

GOAL 8

Decent work and economic growth

Promote sustained, inclusive and sustainable economic growth, full and productive employment and decent work for all.

Technical specifications

NETWORK	
Ethernet ports	<ul style="list-style-type: none"> 2 × 100 Mbps Ethernet, connected back-to-back
POWER	
Input power	<ul style="list-style-type: none"> Voltage: 27 VDC (max) Current: 6.25 A (max)
Power sources	<ul style="list-style-type: none"> Solar panels AC / DC adapter (external accessory)
Output power	<ul style="list-style-type: none"> Total maximum output power (PoE + AUX): 30 Watt 2 × 0/24/48 VDC selectable Passive PoE 48 VDC - Max Power 30W as PSE 24 VDC - Max Power 30W as PSE (15W/port) • 1 x AUX + 24 VDC - Max Power 30 W
Output terminals	<ul style="list-style-type: none"> 2 x RJ45 data ports 1 x RJ45 port for IoT (only) 1 x DC cable terminal
Input terminals	<ul style="list-style-type: none"> 2 x MC4 connectors (male / female)
Solar panel specifications	<ul style="list-style-type: none"> 36 cell panels Minimum Vmp: 18 V Maximum Voc: 27 V
Power usage	<ul style="list-style-type: none"> Controller self-consumption : <0.9 W
GENERAL	
Model number	<ul style="list-style-type: none"> FTP-830-00053
Warranty	<ul style="list-style-type: none"> 3-year hardware warranty
BATTERY	
Type	<ul style="list-style-type: none"> Lithium-ion 18650 cells 3.6V, 3,400 mAh is recommended
Capacity	<ul style="list-style-type: none"> 150Wh / 300Wh, dependent on configuration
Voltage	<ul style="list-style-type: none"> Battery voltage: 11 V nominal
Output terminals	<ul style="list-style-type: none"> 2 x RJ45 data ports 1 x RJ45 port for IoT (only) 1 x DC cable terminal
PHYSICAL	
Mounting	<ul style="list-style-type: none"> Tower, pole, wall
Dimensions	<ul style="list-style-type: none"> Height: 27 cm / 10.6 in Width: 21.4 cm / 8.4 in Depth: 9 cm / 3.5 in
Operating temperature	<ul style="list-style-type: none"> Charging: +0°C to +45°C / +32°F to +113°F Discharging: -20°C to +60°C / -4°F to +140°F
Weight	<ul style="list-style-type: none"> FTP-300 excluding batteries : 2.20 kg / 4.85 lbs FTP-300 with 150 Wh (18 cell) battery configuration: 3.05 kh / 6.72 lbs FTP-300 with 300 Wh (36 cell) battery configuration: 3.90 kg / 8.60 lbs
Box IP-Rating	<ul style="list-style-type: none"> IP65
Material (Box)	<ul style="list-style-type: none"> Die-cast aluminum, stainless steel

Related accessories

We offer a range of accessories that allows you to install and operate FTP-300 with any supported network equipment in any location.

Li-Ion 18650 batteries

Part#: FTP-740-00018

Lithium-ion 18650 3.6V, 3,400 mAh battery cell. 18 batteries required for 150 Wh configuration. 36 batteries required for 300 Wh configuration.

AC Power Support

Part#: FTP-840-00008

IP67 outdoor rated AC/DC adapter with MC4 connectors for the FTP-300.

Fuse Pack

Part#: FTP-840-00014

Bag of extra fuses for FTP-300.